

COMPANY PROFILE '23



HESABU VISION

FLY & ANALYSE !

WWW.HESABUVISION.COM



TAKE
ALTITUDE
YOU WILL SEE
SOME DETAILS

» AERIAL SURVEY
» DATA ACQUISITION
» ARIEL PHOTO & VIDEOGRAPHY

» CONTACT@MELVINPIRARD.COM
» INFO@HESABUVISION.COM

» +243 84 04 02 953

» 244 AV. LUFUNA - KOLWEZI - DRC

OUR SERVICES

» SURVEY

- » Our Drone Mapping Systems are autonomous
- » Fly preprogrammed routes via auto-pilot & telemetry
- » Autopilot firmware coded for photogrammetric precision mapping
- » True accurate mapping systems (photogrammetric)
- » Rapid data acquisition and delivery
- » Safe & reliable
- » Can fly under clouds and in strong winds

» INSPECTIONS

- » Inspections and mapping services for factory roofs, cell towers, cooling towers, oil and gas infrastructures, wind farms, power lines,...
- » Confined Space Tank Inspections
- » Drones can inspect hazardous places and systems reducing the time needed and production. It's easier to operate and need less requirements to work in unsafe heights or confined spaces.
- » In few minutes, a large quantity of images is produced and collected, which gives us the opportunity to inspect clearly in high resolution what we are looking for.
- » You'll obtain photography / 2D videos and 3D videos

» VIDEOGRAPHY

- » You would like to show to your customers the different activities carried out on your sites.
- » Have a visual report, fast and efficient with dynamics annotations
- » You would like to have a 4K video representative of your activities to promote your business in order to reach other customers
- » A high resolution video in 4K will be produced with or without music.

» PHOTOGRAPHY

- » You need high resolution images of your finished or ongoing projects
- » You desire some advantageous pictures of your sites.
- » You wish to obtain a regular follow-up of your sites seen from above.
- » The images obtained with a drone are in Full HD thanks to its high resolution sensor of 20 million pixels



YOU HAVE AN IDEA ? WE CAN DISCUSS ABOUT IT !

All projects can be defined according to your desires and requirements. We can easily tailor our drones to the mission to get exactly what you want.

Everything is possible.

HOW WE WORK



01 BRIEFING & PERMISSION

Each project will be discussed between your team and us. We develop a plan according to your objectives, time and technical possibilities.

02 ARRIVAL & SET UP

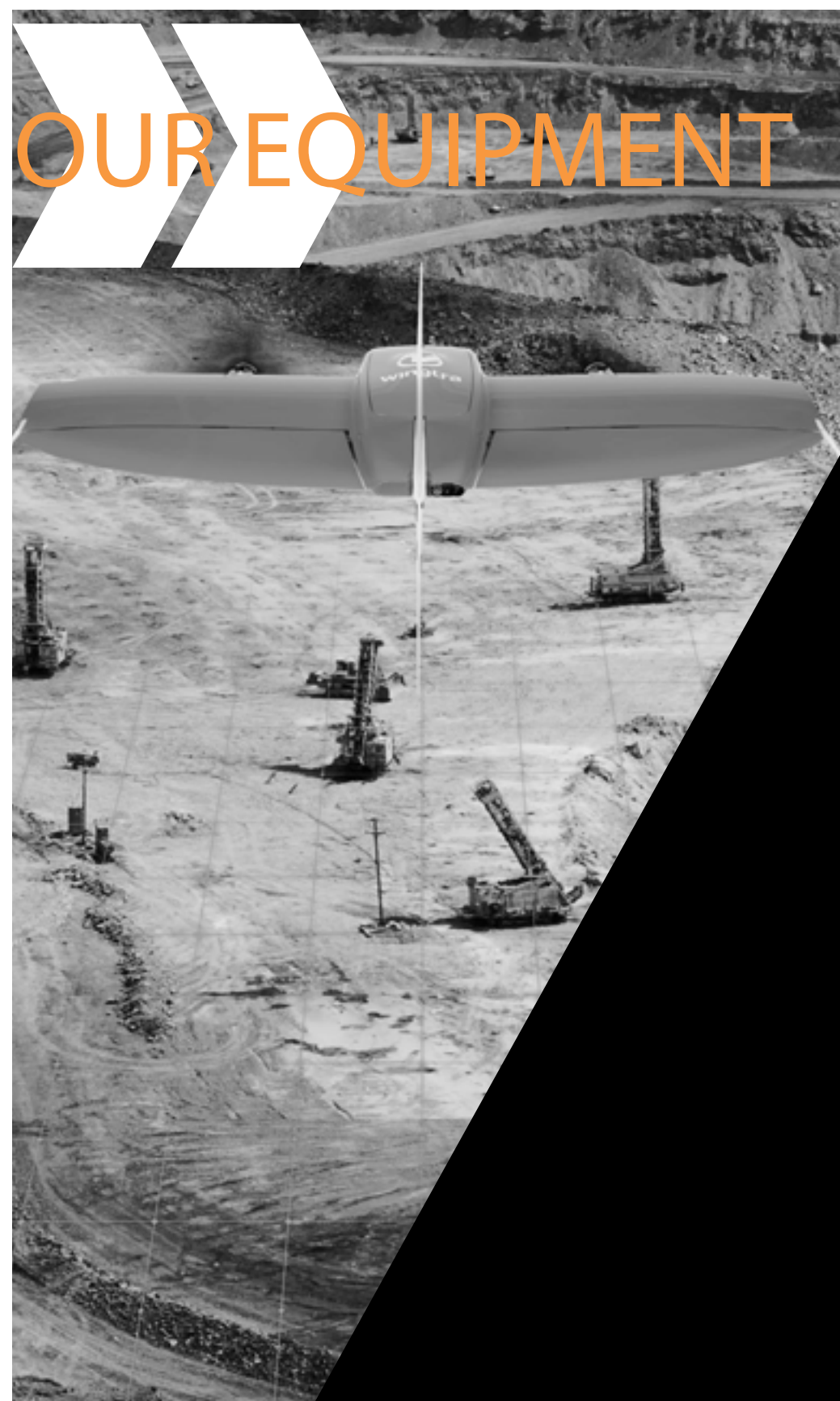
The day of operations, each flight is planned in advance to minimize working time and allow optimization of operations. A safety zone is also installed to reduce the risks linked to activities

03 FLY & DATA RECORDING

Each flight makes it possible to capture as precisely as possible the information necessary for the development of 3D maps,... The high-tech technology of drones allows to follow perfectly and stably flight plans developed by our team and thus ensure the success of the mission.

04 DATA PROCESSING & TRANSFER

All data is processed in a photogrammetric program dedicated to 3D imaging. The processing of these datas provides a variety of GIS and CAD compatible files as well as 3D maps, orthophotoplans, point clouds, digital surface models (DSM) and digital terrain model (DTM).



» DJI MAVIC 3 PRO ENTERPRISE

- ◆ One of the best drone for High Resolution photography with its 40 MegaPixels
- ◆ Thermal camera allows high definition survey and monitoring
- ◆ It has omnidirectional obstacle detection giving it a considerable advantage for inspections
- ◆ Perfect for small 3D mapping ; Aerial Inspection ; Aerial Photo and Videography

» WINGTRA GEN II - RGB 61

- ◆ This is the best UAV on the market for Drone Survey.
- ◆ This UAV is specially made for survey.
- ◆ Up to 80% faster surveying operations
- ◆ WINGTRA RGB 61 CAN MAP UP TO 310 HA IN ONE FLIGHT WITH A GSD OF 1.7CM, which is 4x times more than other fixed-wing drones and 28x times more than multicopters.
- ◆ Take off and landing vertically (VTOL)
- ◆ The best camera equipment available in the drone industry. The UX-11 offers a full-frame 61 MP payload, which guarantees better map reconstruction.
- ◆ 1.7 cm absolute accuracy ! The Wingtra GEN II PPK use option to reach down to 1 cm accuracy, previously only possible with ground-based survey equipment



» TRIMBLE R12 BASE + ROVER

- ◆ Better RTK and Trimble RTX performance near canopy. Increased accuracy, reliability and productivity near tree canopy.
- ◆ Robust performance in urban environments. .
- ◆ Flexible signal management.
- ◆ More signals, more satellites.

High-precision 3D topographic surveys, quantification of materials to optimize production monitoring. Improved operations and reduced operational costs.



OUTPUTS PROVIDED

- ✓ POINT CLOUD
- ✓ ORTHOMOSAIC
- ✓ DSM & DTM
- ✓ CONTOURS LINES
- ✓ BREAKLINES
- ✓ 3D MESH
- ✓ PICTURES & VIDEO

IF Needed we can provide :

- ✓ ELEVATION PROFILE
- ✓ VOLUME CALCULATION
- ✓ THERMAL IMAGERY

EXECUTION SPEED

Traditional topographic surveys are a slow and labor-intensive process requiring the collection of GPS points. Depending on the area, several hundred points must be collected manually, which may take several days or more.

- ✓ Few flights are sufficient to obtain an accurate topographic survey of the entire mine or road.
- ✓ Fast encoding of the data, they may already be available a few hours later.



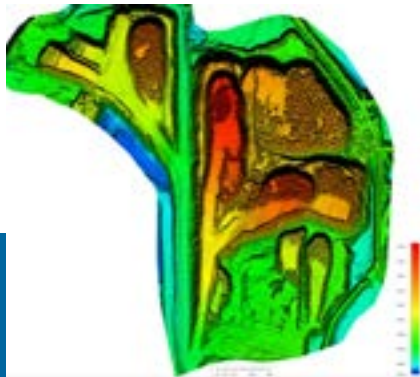
High Definition Orthophoto-plans creation

High definition orthophotoplans are the basis for map creation. They allow users to navigate through the mine , observe and examine in detail in order to better plan activities.



Stocks and volumes

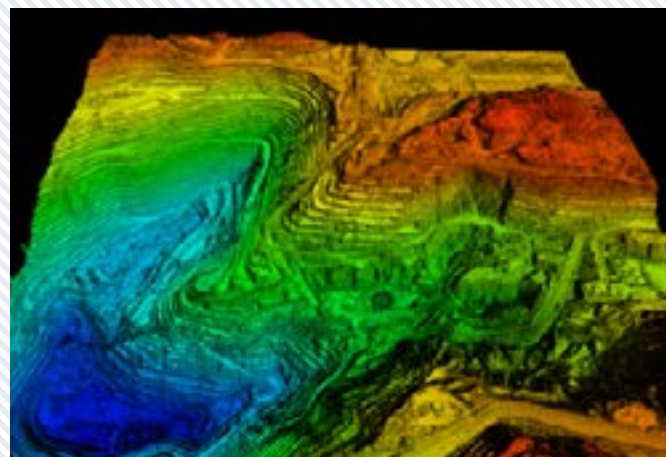
We provide several cubic calculation systems for each situation. So it is very easy to know the cubage and tonnage of each stock depending on the product chosen.



Different Outputs generated

We provide several files that help you to measure and monitore the work done on your sites.

PORTFOLIO



01 DRONE SURVEY - OUTPUTS FILES

This is an exemple of DTM that we can produce.
Each flight produces DTM files (Digital Terrain Model), DSM files (Digital Surface Model), that can be use in differents softwares as GIS or CAD.

All these files contains many information that can help you to manage your site as Road, Open pit Mining,...



02 DRONE SURVEY - 3D MAPPING

3D mapping is the first step in data processing.
A point cloud will be created with all the images and data to represent the subject we are studying.

This point cloud is useful to calculate surfaces and volumes and will be essential to create the 3D representation.

The 3D representation will be interesting for inspections without risk taking, to study the subject easily, and you will be able to present your subject with didactic support to your team or your customers.



03 DRONE PHOTOGRAPHY

Have you just started or finished a job and want to present it through a weekly or monthly report ?

We offer you high quality photos to best represent your work.

04 DRONE VIDEOGRAPHY

It is easy to make a high quality video of the work done on site. Your customers will understand more easily and see how the job is done.

The video is made according to you to adapt perfectly to the spirit of your business.

We can also tag videos with dynamic and professional comments to enhance the presentation of your work to your team or client.



THEY TRUSTED US





HESABU VISION

FLY & ANALYSE



» HESABU VISION SARL
» BANK ACCOUNT : 00017-25500-02466460001-03
» TAX NUMBER : A2044282F
» RCCM : CD/KWZ/RCCM/20-B-00135
» 244, Av. Lufuna, Kolwezi - DR Congo